

## Analysis of Registered Childcare Places in Wales 2004-2005

### Notes:

Data relates to services for children under eight years of age that are regulated by the Care Standards Inspectorate for Wales (CSIW).

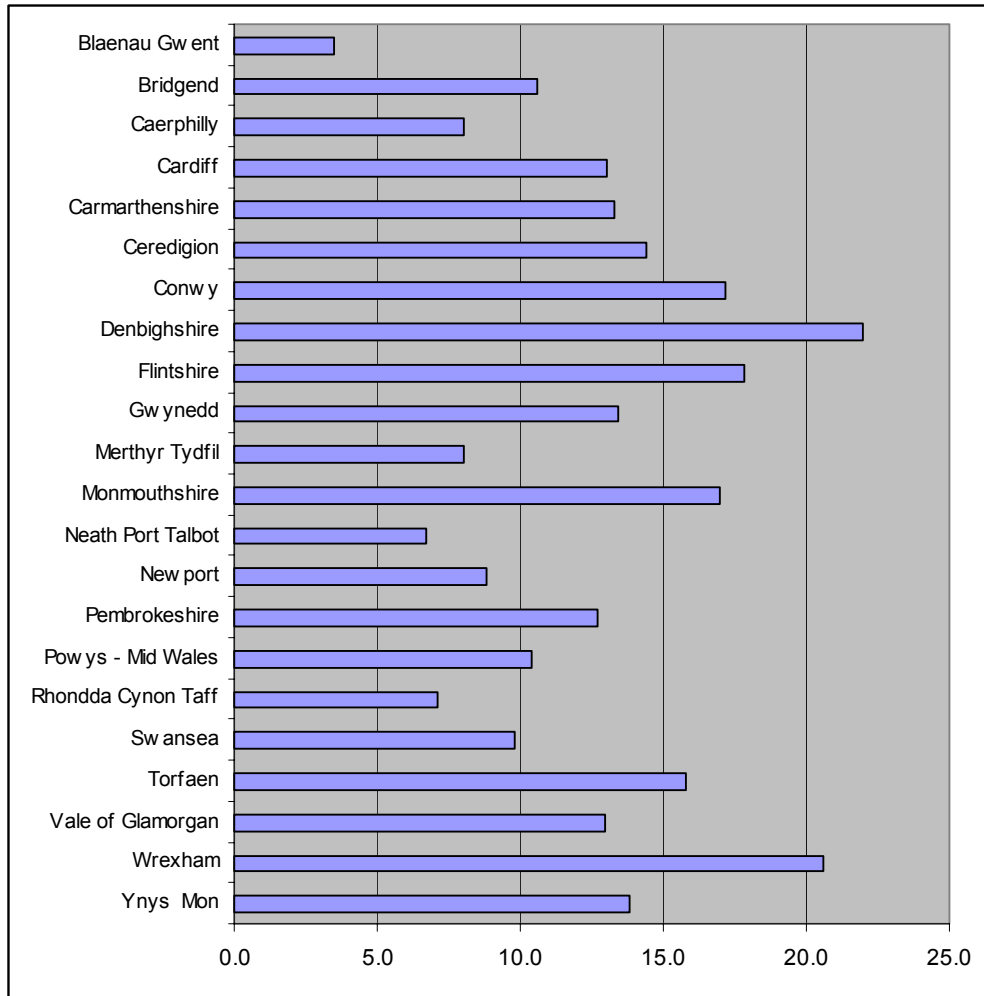
Registered place data provided by CSIW and refers to maximum registered places not places available nor places filled.

Child population data from ONS 2001 Census.

**Figure 1: Number of Registered Childcare Places June 2005**

	Childminder	Creche	Full Daycare	Out of School Care	Sessional Care	Total
<b>Blaenau Gwent</b>	123	50	131	52	134	<b>490</b>
<b>Bridgend</b>	635	28	941	264	739	<b>2,607</b>
<b>Caerphilly</b>	686	87	535	604	842	<b>2,754</b>
<b>Cardiff</b>	1,676	416	2,195	2,092	1,365	<b>7,744</b>
<b>Carmarthenshire</b>	417	0	841	1,673	1,230	<b>4,161</b>
<b>Ceredigion</b>	307	0	304	494	606	<b>1,711</b>
<b>Conwy</b>	485	15	980	699	1,057	<b>3,236</b>
<b>Denbighshire</b>	358	0	1,448	1,060	881	<b>3,747</b>
<b>Flintshire</b>	664	123	1,273	1,718	1,324	<b>5,102</b>
<b>Gwynedd</b>	535	48	623	404	1,247	<b>2,857</b>
<b>Merthyr Tydfil</b>	76	0	248	357	216	<b>897</b>
<b>Monmouthshire</b>	317	8	482	1,248	639	<b>2,694</b>
<b>Neath Port Talbot</b>	345	0	329	730	250	<b>1,654</b>
<b>Newport</b>	392	102	1,248	236	556	<b>2,534</b>
<b>Pembrokeshire</b>	472	33	442	818	1,019	<b>2,784</b>
<b>Powys - Mid Wales</b>	354	0	510	611	917	<b>2,392</b>
<b>Rhondda Cynon Taff</b>	823	38	739	863	752	<b>3,215</b>
<b>Swansea</b>	680	16	1,657	802	713	<b>3,868</b>
<b>Torfaen</b>	250	111	552	1,522	426	<b>2,861</b>
<b>Vale of Glamorgan</b>	989	97	505	695	813	<b>3,099</b>
<b>Wrexham</b>	384	82	1,259	1,708	1,455	<b>4,888</b>
<b>Ynys Mon</b>	322	86	187	258	832	<b>1,685</b>
<b>Wales</b>	11,290	1,340	17,429	18,908	18,013	<b>66,980</b>

**Figure 2: Number of Registered Childcare Places (with Childminders, Creches, Out of School Clubs, Full Daycare, Sessional Daycare) per 100 resident children aged 0 to 14 years of age.**



**Note: All-Wales rate is 12.2 places per 100 children.**

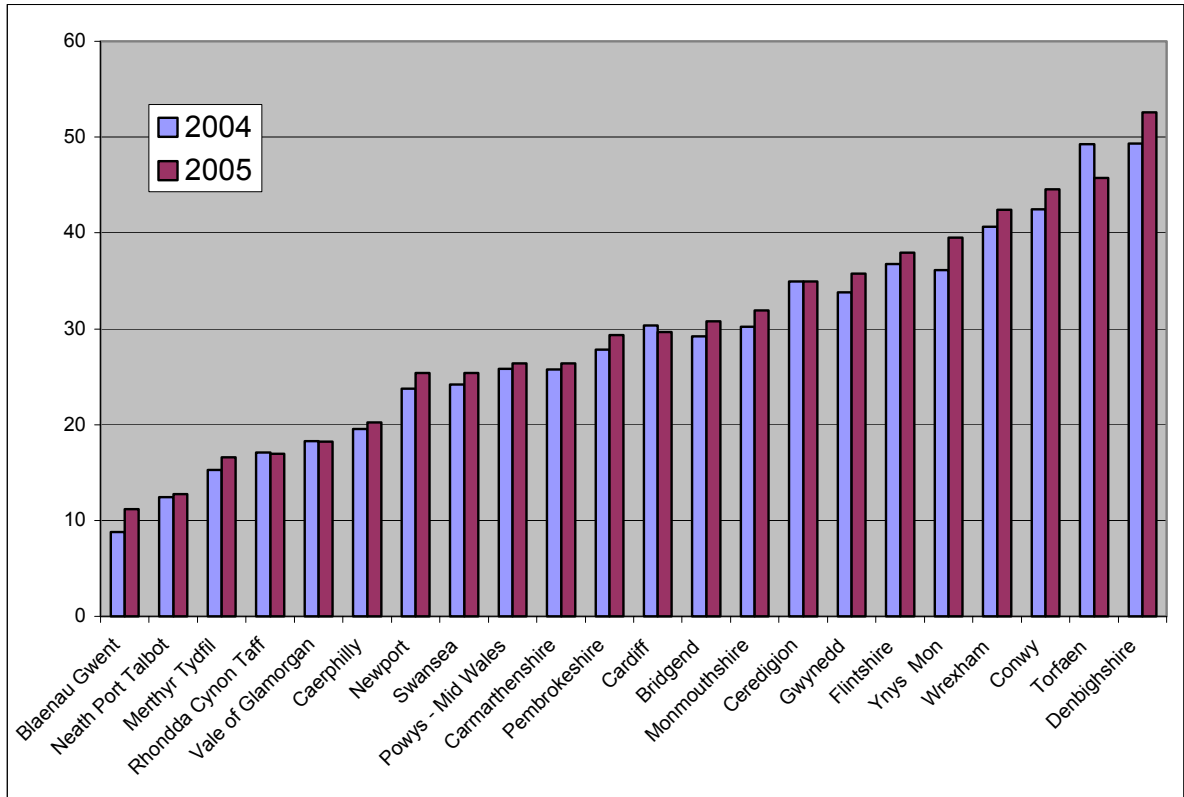
**Figure 3: Change in Registered Childcare Places (excluding out of school care) June 2004 to June 2005**

	<b>2004</b>	<b>2005</b>	<b>Change</b>
<b>Blaenau Gwent</b>	346	438	<b>27%</b>
<b>Bridgend</b>	2,225	2,343	<b>5%</b>
<b>Caerphilly</b>	2,076	2,150	<b>4%</b>
<b>Cardiff</b>	5,782	5,652	<b>-2%</b>
<b>Carmarthenshire</b>	2,427	2,488	<b>3%</b>
<b>Ceredigion</b>	1,217	1,217	<b>0%</b>
<b>Conwy</b>	2,418	2,537	<b>5%</b>
<b>Denbighshire</b>	2,520	2,687	<b>7%</b>
<b>Flintshire</b>	3,278	3,384	<b>3%</b>
<b>Gwynedd</b>	2,320	2,453	<b>6%</b>
<b>Merthyr Tydfil</b>	497	540	<b>9%</b>
<b>Monmouthshire</b>	1,370	1,446	<b>6%</b>
<b>Neath Port Talbot</b>	901	924	<b>3%</b>
<b>Newport</b>	2,150	2,298	<b>7%</b>
<b>Pembrokeshire</b>	1,865	1,966	<b>5%</b>
<b>Powys - Mid Wales</b>	1,744	1,781	<b>2%</b>
<b>Rhondda Cynon Taff</b>	2,370	2,352	<b>-1%</b>
<b>Swansea</b>	2,917	3,066	<b>5%</b>
<b>Torfaen</b>	2,590	2,404	<b>-7%</b>
<b>Vale of Glamorgan</b>	1,343	1,339	<b>0%</b>
<b>Wrexham</b>	3,048	3,180	<b>4%</b>
<b>Ynys Mon</b>	1,305	1,427	<b>9%</b>
<b>Wales</b>	<b>46,709</b>	<b>48,072</b>	<b>3%</b>

**Figure 4: Number of Childcare (excluding Out of School) places per 100 resident children aged 0 to 4 years of age 2004 to 2005**

	<b>2004</b>	<b>2005</b>	<b>Change</b>
<b>Blaenau Gwent</b>	8.82	11.16	<b>27%</b>
<b>Bridgend</b>	29.23	30.78	<b>5%</b>
<b>Caerphilly</b>	19.55	20.25	<b>4%</b>
<b>Cardiff</b>	30.36	29.68	<b>-2%</b>
<b>Carmarthenshire</b>	25.75	26.40	<b>3%</b>
<b>Ceredigion</b>	34.91	34.91	<b>0%</b>
<b>Conwy</b>	42.45	44.54	<b>5%</b>
<b>Denbighshire</b>	49.32	52.58	<b>7%</b>
<b>Flintshire</b>	36.77	37.96	<b>3%</b>
<b>Gwynedd</b>	33.81	35.75	<b>6%</b>
<b>Merthyr Tydfil</b>	15.24	16.56	<b>9%</b>
<b>Monmouthshire</b>	30.22	31.89	<b>6%</b>
<b>Neath Port Talbot</b>	12.45	12.77	<b>3%</b>
<b>Newport</b>	23.75	25.39	<b>7%</b>
<b>Pembrokeshire</b>	27.82	29.33	<b>5%</b>
<b>Powys - Mid Wales</b>	25.83	26.37	<b>2%</b>
<b>Rhondda Cynon Taff</b>	17.07	16.94	<b>-1%</b>
<b>Swansea</b>	24.17	25.40	<b>5%</b>
<b>Torfaen</b>	49.27	45.73	<b>-7%</b>
<b>Vale of Glamorgan</b>	18.29	18.23	<b>0%</b>
<b>Wrexham</b>	40.62	42.38	<b>4%</b>
<b>Ynys Mon</b>	36.13	39.51	<b>9%</b>
<b>Wales</b>	27.82	28.63	<b>3%</b>

**Figure 5: Number of Childcare (excluding Out of School) places per 100 resident children aged 0 to 4 years of age 2004 to 2005. Ranked by Local Authority.**



David Dallimore

01492 642462

david.dallimore@melynconsulting.co.uk

www.melynconsulting.co.uk