



Analysis of Registered Childcare Places in Wales 2005-2006

September 2006

1. Introduction

- 1.1 In September 2005 we published data relating to the amount of registered childcare in Wales. This report provides an update of this data and provides further analysis of the information.
- 1.2 Data refers only to childcare that is registered by the Care Standards Inspectorate for Wales (CSIW) against the National Minimum Standards set by the Welsh Assembly Government.
- 1.3 Most of the information presented relates to childcare as defined within five categories by CSIW:
 - Childminding
 - Full Day Care
 - Sessional Day Care
 - Out of School Care
 - Crèches
- 1.4 The amount of registered Open Access Play provision (which is also registered by CSIW) is analysed separately.

2. Registered Childcare Places

2.1 Overall, the number of registered childcare places in Wales remained stable between 2005 and 2006 with just a 0.3% increase in volume.

Figure 1: Volume of childcare places¹

	2005	2006	Difference
Childminders	11,290	11,628	3.0%
Full Daycare	17,429	18,074	3.7%
Sessional Daycare	18,013	17,291	-4.0%
Out of School Care	18,908	18,852	-0.3%
Crèche	1,340	1,345	0.4%
All Childcare	66,980	67,190	0.3%

- 2.2 Increases in the number of registered places with childminders and day nurseries reflected an increase in the number of settings (by 68 and 8 respectively).
- 2.3 Decreases in the number of sessional daycare places reflected the net loss of 33 settings over the period (June 2005 to June 2006). Similarly, a net loss of 10 out of school clubs took place.
- 2.4 Whilst there was been a net loss of 2 crèches, the number of places in crèches increased by 5.
- 2.5 Taking into account a proportion of all childminder places, the amount of daycare² available increased by 3.5% over the period and places for school-aged children³ increased by 0.2%.
- 2.6 Analysis by local authorities (Figure 2) in Wales showed that overall increases in registered childcare occurred in 10 out of the 22 areas compared with increases in 18 areas the previous year. The largest increase in places took place in Torfaen where significant increases in childminder (22%), full daycare (34%) and out of school care (14%) places took place. Large increases also took place in Conwy and Monmouthshire.
- 2.7 The most significant loss of registered places took place in Merthyr Tydfil where there was an 18% decrease in childminder places and 29% reduction in out of school places.

¹ Care Standards Inspectorate for Wales June 2005 and June 2006

² Defined as care for more than 3 hours for children aged 4 and under ie. all full daycare places plus two-thirds of childminder places

³ All out of school places and a third of all childminder places.

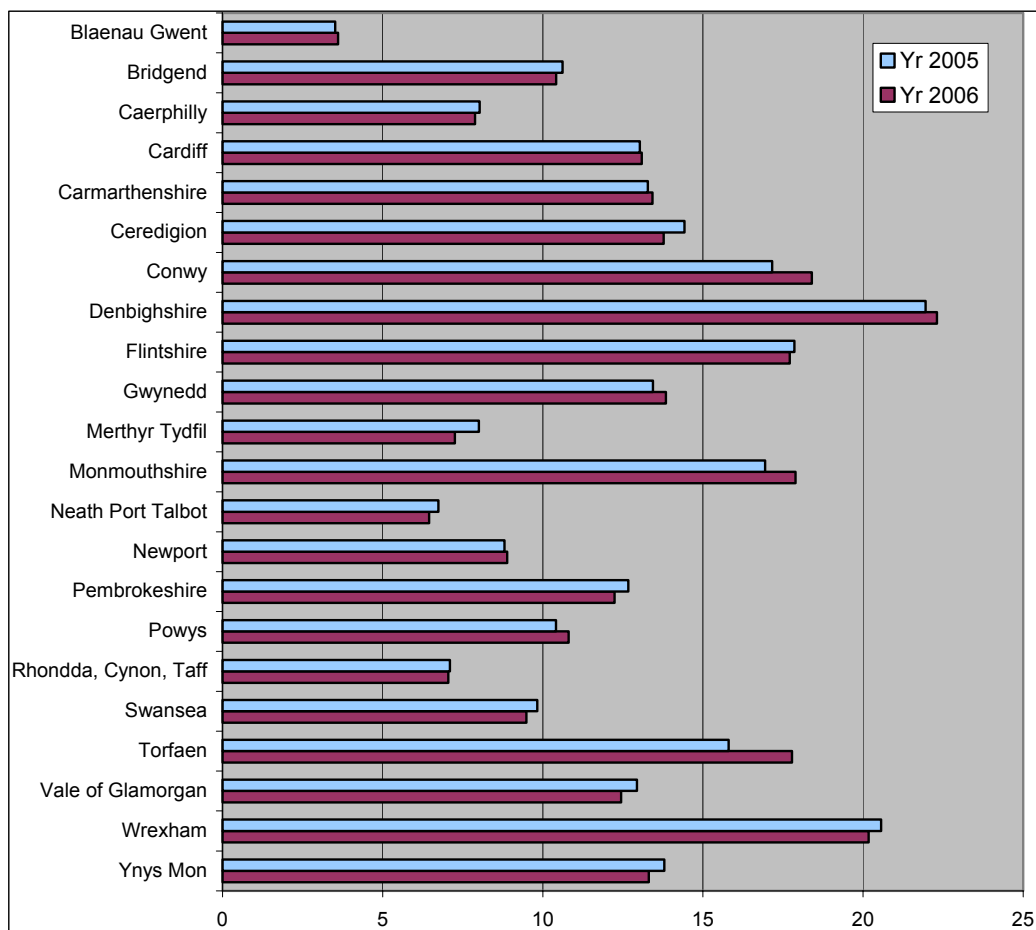
Figure 2: Registered Childcare Places by Local Authority 2005 - 2006

	Childminders		Full Daycare		Sessional Daycare		Out of School Care		Creche		Total 2006	Change 2005-2006
	2005	2006	2005	2006	2005	2006	2005	2006	2005	2006		
Blaenau Gwent	123	128	131	94	134	137	52	92	50	52	503	2.7%
Bridgend	635	680	941	900	739	673	264	278	28	28	2,559	-1.8%
Caerphilly	686	695	535	628	842	723	604	570	87	90	2,706	-1.7%
Cardiff	1,676	1,687	2,195	2,255	1,365	1,323	2,092	2,140	416	373	7,778	0.4%
Carmarthenshire	417	382	841	945	1,230	1,163	1,673	1,696	0	20	4,206	1.1%
Ceredigion	307	295	304	344	606	595	494	392	0	8	1,634	-4.5%
Conwy	485	450	980	1,033	1,057	1,133	699	798	15	55	3,469	7.2%
Denbighshire	358	343	1,448	1,418	881	814	1,060	1,233	0	0	3,808	1.6%
Flintshire	664	701	1,273	1,201	1,324	1,281	1,718	1,728	123	151	5,062	-0.8%
Gwynedd	535	542	623	678	1,247	1,200	404	475	48	48	2,943	3.0%
Merthyr Tydfil	76	62	248	248	216	236	357	255	0	12	813	-9.4%
Monmouthshire	317	353	482	614	639	581	1,248	1,280	8	17	2,845	5.6%
Neath Port Talbot	345	404	329	329	250	270	730	580	0	0	1,583	-4.3%
Newport	392	431	1,248	1,251	556	535	236	252	102	90	2,559	1.0%
Pembrokeshire	472	538	442	485	1,019	935	818	698	33	33	2,689	-3.4%
Powys - Mid Wales	354	388	510	546	917	965	611	584	0	0	2,483	3.8%
Rhondda Cynon Taff	823	818	739	777	752	742	863	818	38	38	3,193	-0.7%
Swansea	680	683	1,657	1,628	713	653	802	756	16	16	3,736	-3.4%
Torfaen	250	305	552	739	426	350	1,522	1,742	111	83	3,219	12.5%
Vale of Glamorgan	989	1,022	505	514	813	765	695	595	97	85	2,981	-3.8%
Wrexham	384	360	1,259	1,253	1,455	1,449	1,708	1,641	82	92	4,795	-1.9%
Ynys Mon	322	361	187	194	832	768	258	249	86	54	1,626	-3.5%
Wales	11,290	11,628	17,429	18,074	18,013	17,291	18,908	18,852	1,340	1,345	67,190	0.3%

3. Proportional Childcare Rates

- 3.1 Comparative levels of childcare between local authorities can be ascertained by relating the number of registered places to the population of children in the relevant age group.
- 3.2 The overall proportion of childcare in Wales remained the same in 2006 with 12.2 places for every 100 children.
- 3.3 There was little change amongst different areas in Wales, with areas in North Wales still having proportionally more childcare than other areas.

Figure 3: Number of Registered Childcare Places (with Childminders, Crèches, Out of School Clubs, Full Daycare, Sessional Daycare) per 100 resident children aged 0 to 14 years of age⁴.



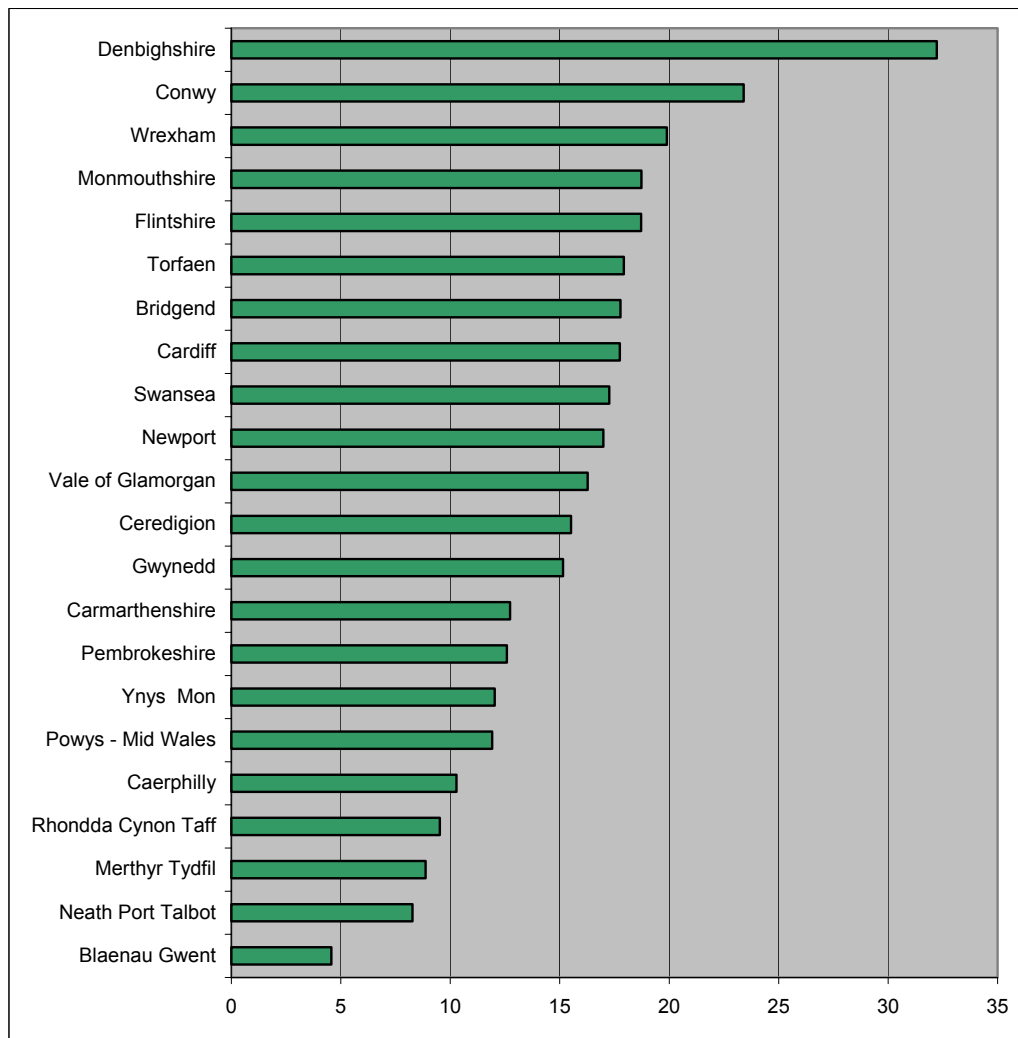
⁴ ONS Population from 2001 Census

Daycare for Pre-School Children

3.4 Overall, there are 15.4 daycare places (full daycare and a proportion of childminding places) for every 100 pre-school children in Wales. This has increased from 14.8 places in 2005.

3.5 Whilst the number of childcare places for pre-school increased between 2005 and 2006, levels are still inconsistent across Wales.

Figure 4: Amount of daycare available for Pre-School Children (places per 100 children aged 0 to 4 in population) 2006

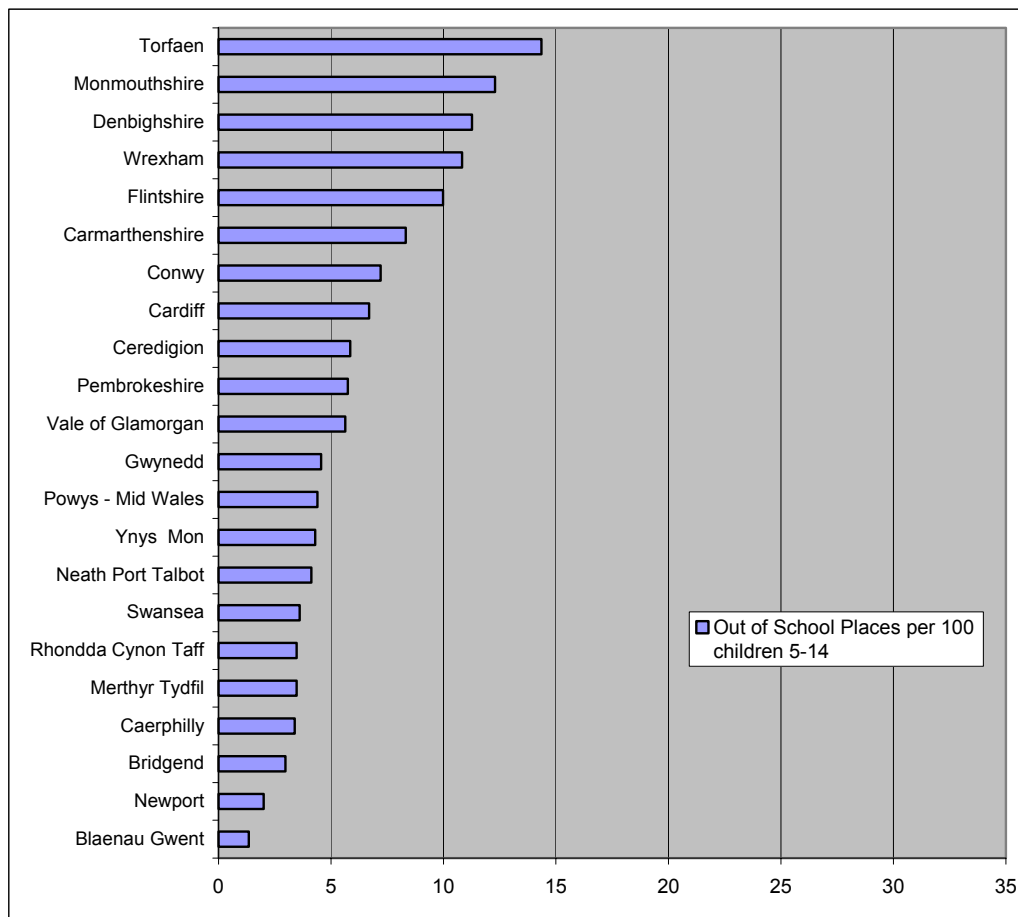


3.6 The largest amount of childcare could be found in Denbighshire where 64 childminders and 30 full daycare settings provided one childcare place for every three children in the area (32 places per 100 children). This contrasted with Blaenau Gwent where 39 childminders and three full daycare settings provided a place for every 22 children (4.6 places per 100 children).

Childcare for School Aged Children

- 3.7 In total, there were 560 out of school clubs registered in Wales in 2006. This was down from 570 settings in 2005. The number of places also fell between 2005 and 2006 by 56.
- 3.8 Whilst the number of registered places was similar over the year, the turnover in registered places is considerable. In 5 local authority areas, losses of more than 100 places each were recorded, whilst two areas together accounted for gains of nearly 400 places (see Figure 2).
- 3.9 There was one out of school place⁵ in Wales, for every 17 children aged 5 to 14 years of age in 2006 (6 places per 100 children).

Figure 5: Amount of registered childcare available for school-aged children (places per 100 children aged 5 to 14 in population) 2006

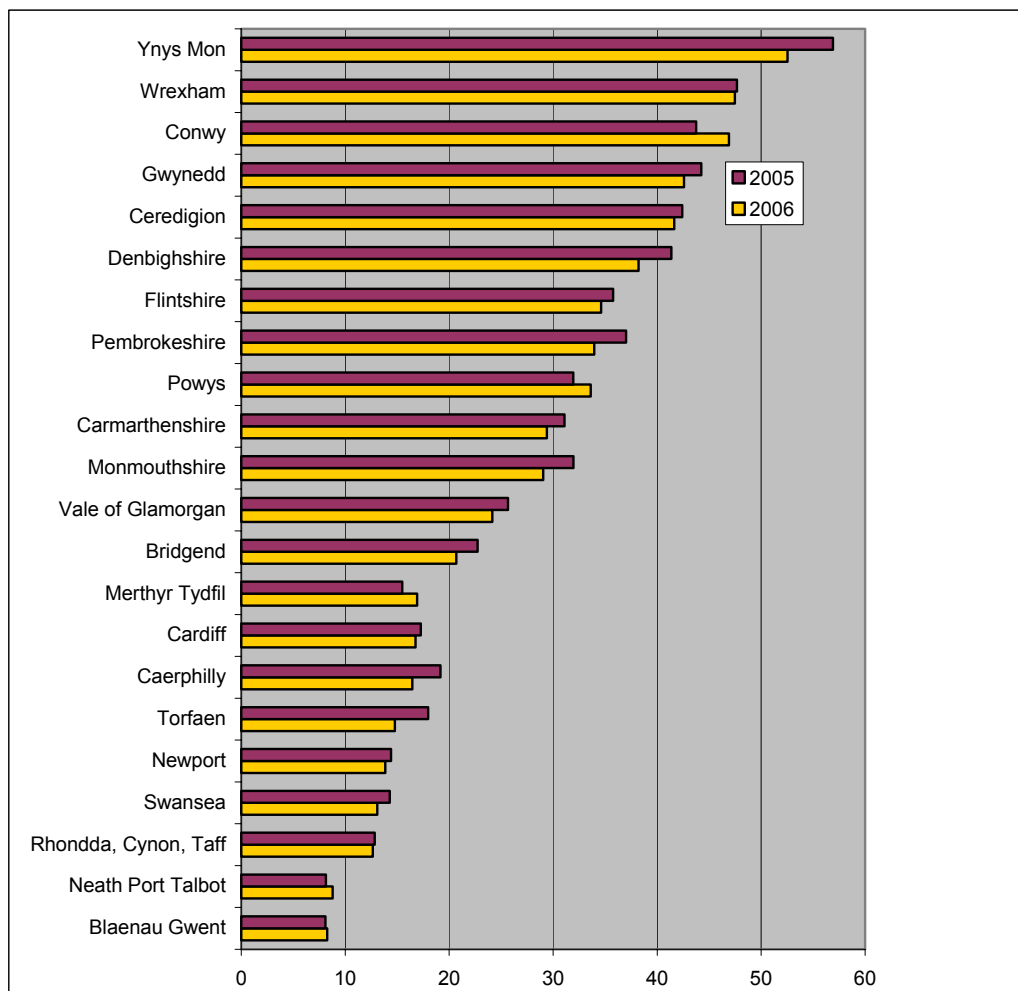


⁵ Figure includes all registered out of school club places and a third of registered childminder places

Sessional Daycare

- 3.10 Between 2005 and 2006 the overall number of sessional daycare places fell by 4%.
- 3.11 Losses in sessional care places took place in 16 out of 22 areas but authorities with high losses of sessional care places were those with the largest increases in full daycare.
- 3.12 The amount of sessional care disproportionate across Wales with provision concentrated in north, mid and west Wales.

Figure 6: Amount of registered sessional daycare available for children aged 3 and 4 (places per 100 children) 2005 and 2006



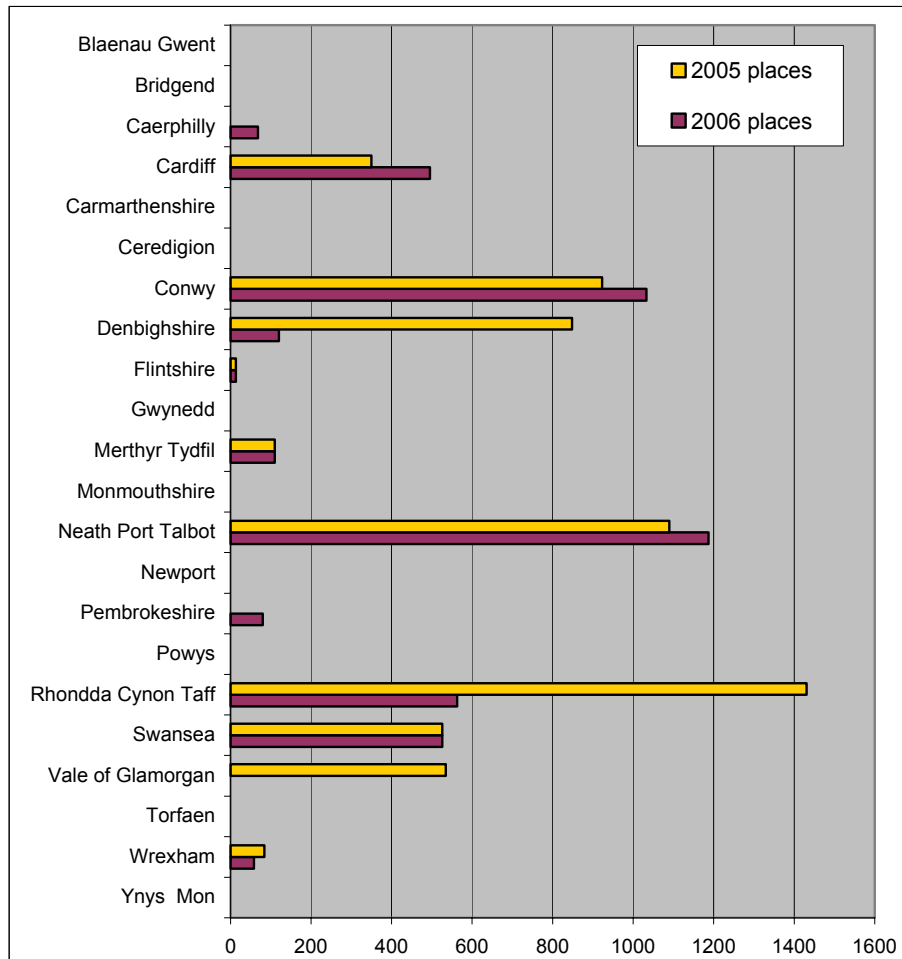
- 3.13 The total stock of sessional daycare now represents one sessional care place for every four children aged 3 and 4 years of age.

4. Open Access Play

4.1 In 2005, there were 125 settings registered by CSIW to provide 5,910 open access play places.

4.2 2006 saw a 25% fall in registrations with just 94 settings providing 4,253 places.

Figure 7: Number of registered Open Access Play places by local authority 2006



4.3 The fall in places is largely due to sharp reductions in registered provision in the Vale of Glamorgan, Rhondda Cynon Taff and Denbighshire.

5. Summary

- Overall levels of childcare in Wales remained static in the year June 2005 to June 2006.
- The full daycare sector expanded but at a slower rate than previously found. The number of registered childminders increased by a small margin.
- In 2006 there was a daycare place for every 6.5 children aged 0 to 4 in Wales. In England there was a daycare place registered for every 4 children⁶.
- There was a reduction in both the number of settings and number of places in sessional daycare settings, and a small reduction in out of school care.
- In Wales, there was an out of school childcare place for every 17 children aged 5 to 14 years of age (1:13 in England).
- Across Wales, the amount of childcare available to families varied widely with proportionally more childcare – and choice of childcare – in North Wales.
- In areas where full daycare increased, the amount of sessional daycare decreased. This suggests that either sessional groups converted to full daycare, or sessional groups lost market share to new day nurseries.
- A significant loss in the amount of registered open access play provision took place between 2005 and 2006 with 25% fewer settings and places.

⁶ OfSTED: Quarterly childcare Statistics as at: 30 June 2006



Melyn Consulting is an experienced, independent organisation providing a wide range of services to local authorities, project partnerships, voluntary organisations and other agencies across England and Wales at a reasonable cost.

Founded in 1999 as *Playcare Services*, initially the main focus of our work was in supporting projects and initiatives focused on play, childcare and early years education, but more recently, our business has grown to include projects linking a wide range of social, environmental and economic policy areas. Our services incorporate all aspects of public and voluntary service planning; encompassing performance audit and review, strategy and service development, resource planning, policy and scheme evaluation, and investigative research.

We know that it is essential for the success of a project to involve trained and seasoned professionals at its heart. While our own staff offer a variety of skills and depth of knowledge and experience, we work effectively with associates and other consultants to make projects happen. Above all, because we understand that social projects form part of the essential fabric of life, we work closely with our clients and their communities toward the realisation of their aspirations and goals.

The organisation is founded upon the pooled resources of development specialists drawn from the public, charitable and voluntary sectors with a strong emphasis on delivering work that is high quality and is based on clear principles of equality of opportunity.

For further information, please contact:

David Dallimore

Melyn Consulting

01492 642462

david.dallimore@melynconsulting.co.uk

www.melynconsulting.co.uk